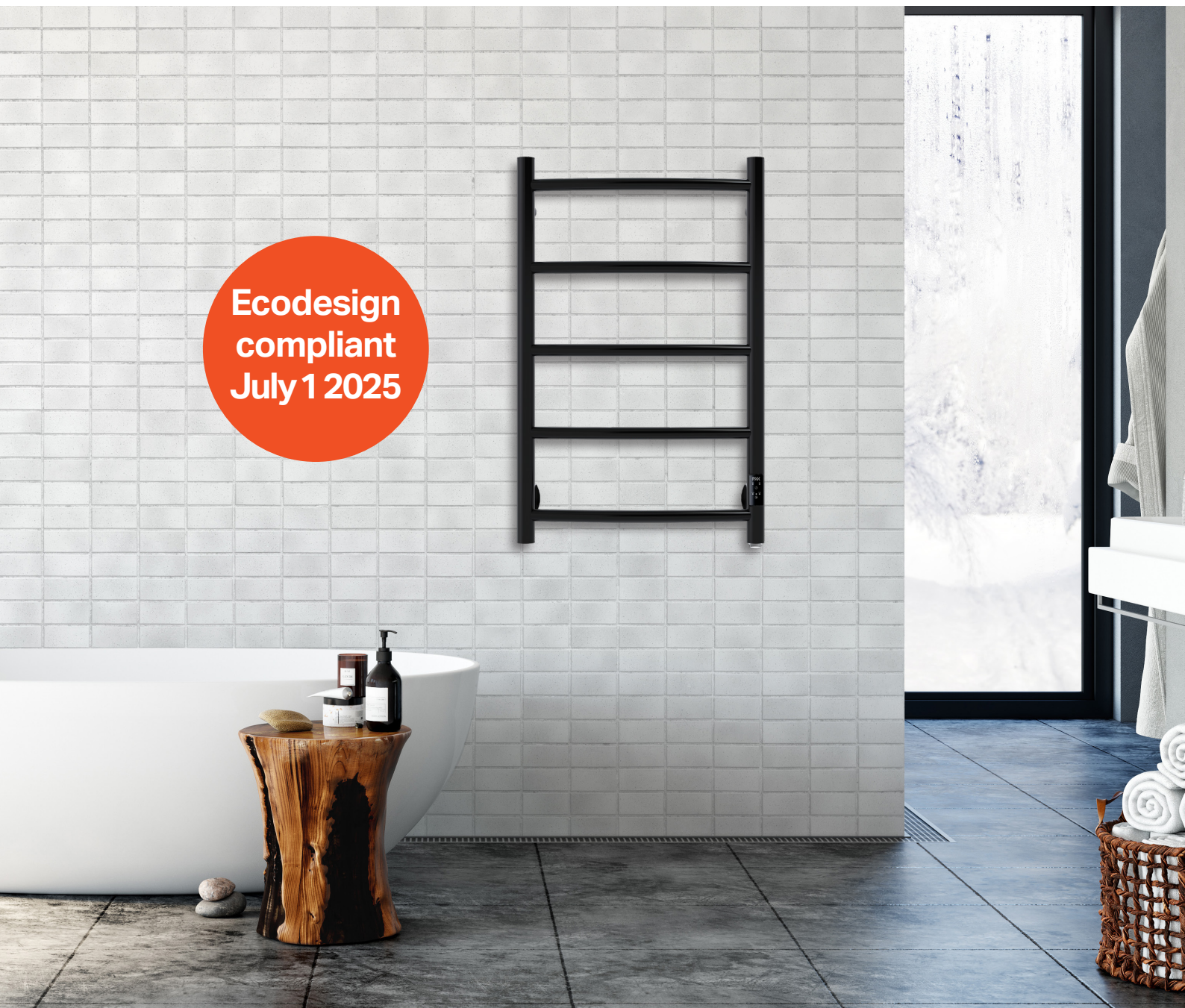


PAX[®]

Pax Duo

Towel warmers with Duo
provide unmatched flexibility.
The ideal solution for any project.

Ecodesign
compliant
July 1 2025





Pax Duo

– Style, function and safety.

Pax Duo is a series of electric towel warmers that combine elegant design with innovative technology, making your everyday life both comfortable and energy-efficient.

With flexible installation options and easy control, Pax Duo is the obvious choice for both private homes and larger projects.

Timeless design in four step-models

Choose the model that suits your style – all made from durable, stainless steel.

For a classic look, there is a polished finish, while the painted matte black surface provides a modern and exclusive feel.

User-friendly timer settings

With intuitive button presses, you can easily control how long you want the towel warmer to heat and dry your towels:

- One-time timer: 3 or 6 hours
- Repeating timer: 3 or 6 hours per day

Adjustable power for optimal energy efficiency

In addition to timer settings, you can also adjust the power to 75% or 50% of the nominal power – a smart feature for both energy savings and comfort.

Flexible electrical connection

The name Duo reflects the option to choose the electrical connection on either the right or left side, simplifying installation – especially for larger projects.

Safety and Quality First

All Pax towel warmers are CE-marked and S-marked, ensuring they meet the highest standards for safety and reliability.

Future-proof and energy-efficient

The Pax Duo series meets the new Eco-design requirements (2024/1103) for electric towel warmers, which come into effect on July 1, 2025. An investment in the sustainable technology of the future!

This is what you get with Pax Duo:

1. Four models in timeless design
2. Stainless steel, polished or matte black
3. Optional electrical connection on the right or left side
4. Timer and power regulation
5. Integrated all-pole switch
6. Towel warmers that meet the new Ecodesign requirements, starting July 1, 2025
7. S-marked – independently certified by Intertek Semko AB



Optional electrical connection right or left



Timer and power regulation



Polished or matte black

Salsa Duo



6-step model with round curved tubes. A functional classic with a modern twist.

- Width 540 mm, Height 700 mm
- Output 55 W
- ⏰ 3h / 6h
- ⚡ 75% / 50%

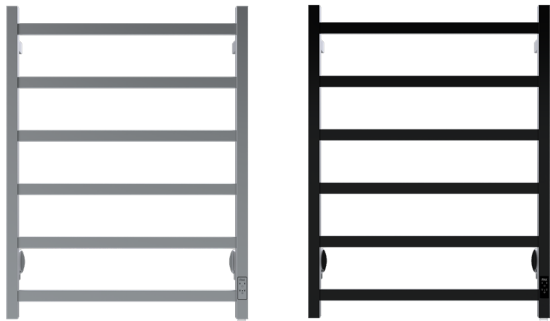
Samba Duo



A narrow model with 5-steps and round curved tubes. A timeless design.

- Width 450 mm, Height 700 mm
- Output 40 W
- ⏰ 3h / 6h
- ⚡ 75% / 50%

Tango Duo



6-step model with square tubes. Classic, sleek design.

- Width 540 mm, Height 700 mm
- Output 50 W
- ⏰ 3h / 6h
- ⚡ 75% / 50%

Foxtrot Duo

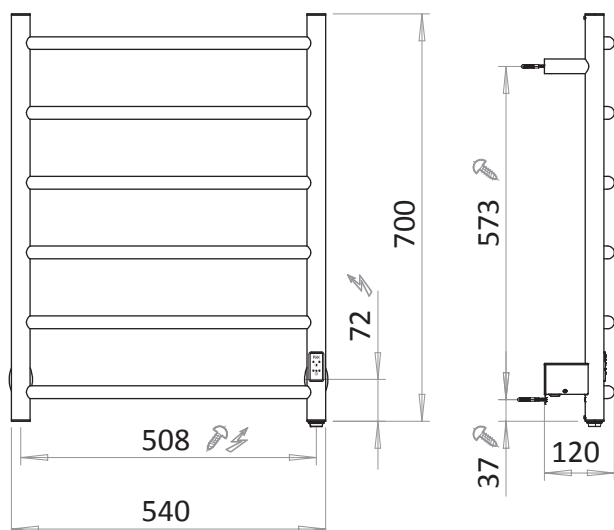


The largest model with slightly higher power. 8-step and round curved tubes.

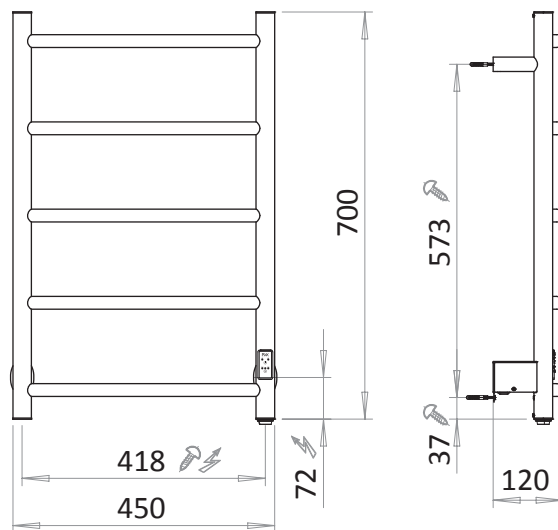
- Width 540 mm, Height 815 mm
- Output 80 W
- ⏰ 3h / 6h / continuous
- ⚡ 75% / 50%

Art. no.	Model	Material	Finish	Output	Width, mm	Height, mm
3711-1	Salsa Duo 540x700	Stainless steel	Polished	55 W	540	700
3712-1	Salsa Duo 540x700, black	Stainless steel	Matte black	55W	540	700
3711-2	Samba Duo 450x700	Stainless steel	Polished	40W	450	700
3712-2	Samba Duo 450x700, black	Stainless steel	Matte black	40W	450	700
3711-3	Tango Duo 540x700	Stainless steel	Polished	50W	540	700
3712-3	Tango Duo 540x700, black	Stainless steel	Matte black	50W	540	700
3711-4	Foxtrot Duo 540x815	Stainless steel	Polished	80W	540	815
3712-4	Foxtrot Duo 540x815, black	Stainless steel	Matte black	80W	540	815

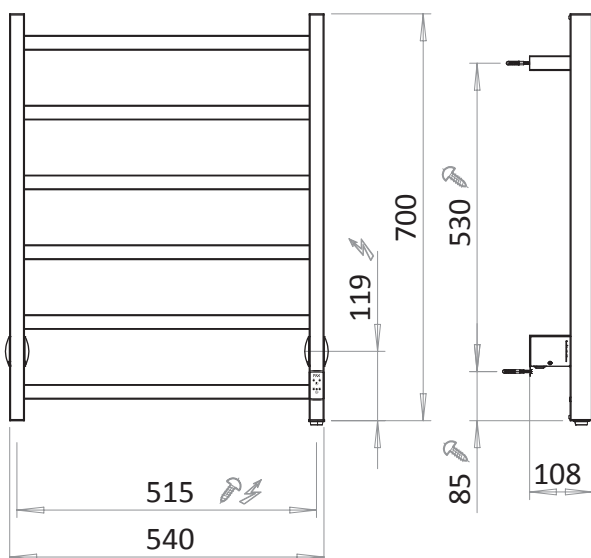
Salsa Duo 540x700



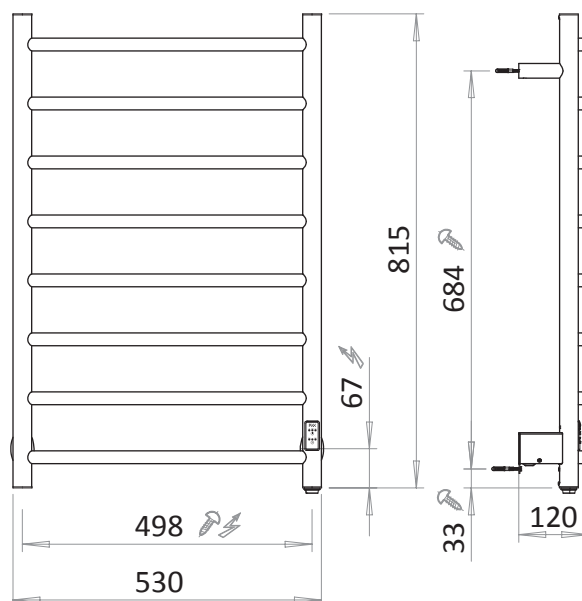
Samba Duo 450x700



Tango Duo 540x700



Foxtrot Duo 530x815



Stated dimensions are approximate. Always measure the actual product before drilling.
Pax assumes no liability for incorrect installation resulting from failure to follow the installation instructions

