

# Tune VWS E



Colour included  
in the price

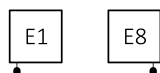
design: *Terma*

## Connections:

A ↓ 600



A ↓ 1800






## We recommend:

MOA heating element



## Specifications:

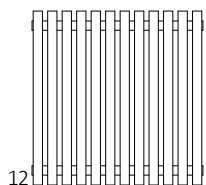
A ↓	B ↔	 [W]	D [mm]	E [mm]	F [mm]	 [dm <sup>3</sup> ]	 [kg]	Product Code <small>Configuration codes: 5</small>
600	590	400	490	500	50	5,77	12,90	WLTSV060059
600	790	600	690	500	50	7,69	17,14	WLTSV060079
600	990	800	890	500	50	9,62	21,39	WLTSV060099
600	1190	1000	1090	500	50	11,54	25,63	WLTSV060119
600	1390	1000	1290	500	50	13,47	29,87	WLTSV060139
600	1590	1200	1490	500	50	15,26	33,72	WLTSV060159
1800	290	600	190	1600	50	7,83	17,11	WLTSV180029
1800	490	1000	390	1600	50	13,06	28,41	WLTSV180049
1800	690	1500	590	1600	50	18,29	39,70	WLTSV180069

# Tune VWS E

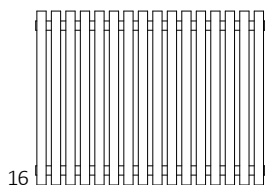


Colour included  
in the price

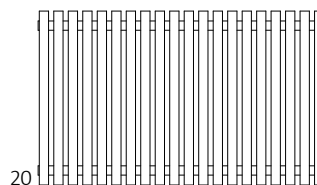
## Available sizes:



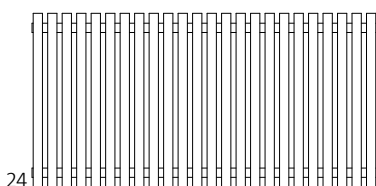
12  
600 x 590  
⇕ ⇔



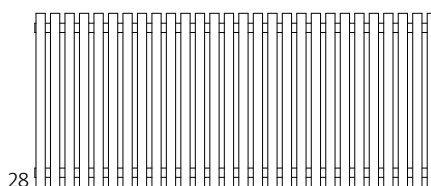
16  
600 x 790



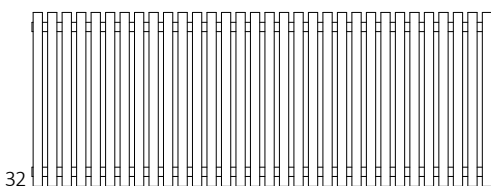
20  
600 x 990



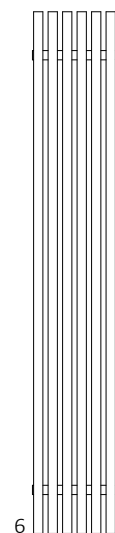
24  
600 x 1190  
⇕ ⇔



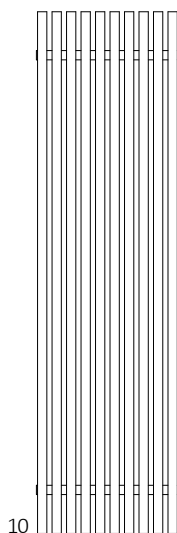
28  
600 x 1390



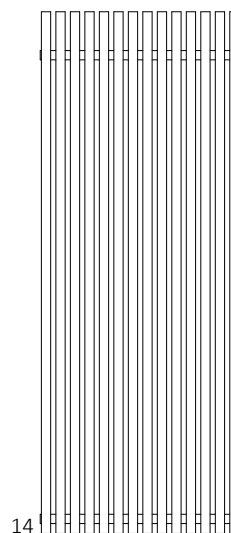
32  
600 x 1590  
⇕ ⇔



6  
1800 x 290  
⇕ ⇔



10  
1800 x 490



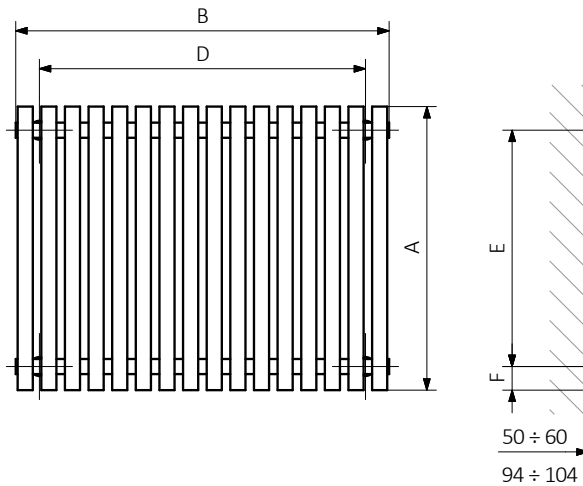
14  
1800 x 690

# Tune VWS E

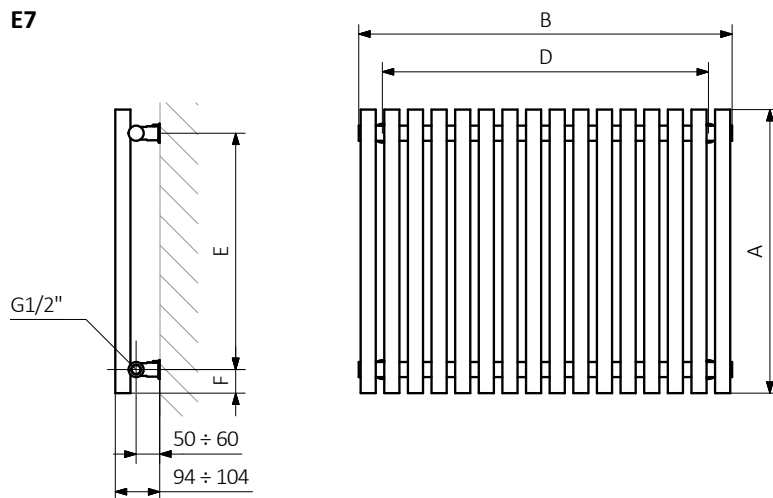


Colour included  
in the price

**E2**

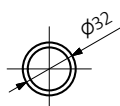


**E7**



A — Height B — Width C1-C5 — Distance between pipe centres D — Horizontal distance between mounting bracket centres  
E — Vertical distance between mounting brackets F — Distance between a mounting bracket and the bottom of the radiator

**Profile:**

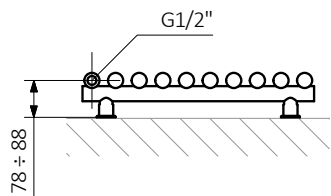


# Tune VWS E

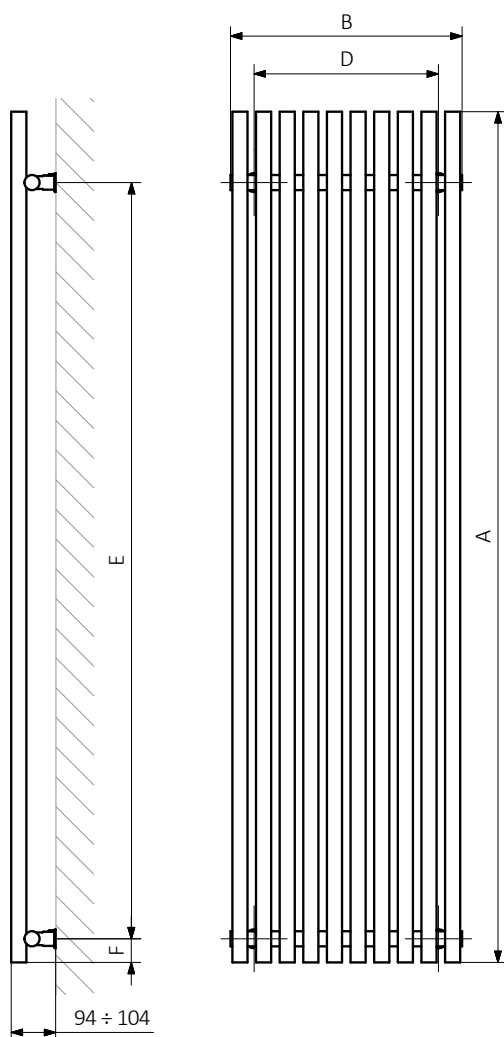
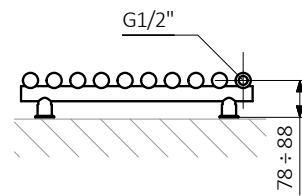


Colour included  
in the price

**E1**

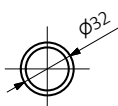


**E8**



A — Height B — Width C1-C5 — Distance between pipe centres D — Horizontal distance between mounting bracket centres  
E — Vertical distance between mounting brackets F — Distance between a mounting bracket and the bottom of the radiator

**Profile:**





Colour included  
in the price

Product codes can be found in product data sheet tables. The codes provide some basic information about the product while a partially filled configuration code contains complementary information about the detailed specifications. When placing an order, product codes should include the fully completed configuration part. The configuration code part should be placed after the main product code. The main product code and configuration part will appear as shown in the example below:

## Construction of electric heater configuration code

WLALE054030

K916E1DRYM

PRODUCT CODE

(located in the table for the product)

CONFIGURATION CODE

(supplemented by hand)

## Configuration

K 916 E1 DRY M

Package code   Colour code   Connection code   Heating element code   Type of heating element cable code

*K – carton box*

## Zinc powder primer

**C** – Code of zinc powder primer is an extra processes

WLALE054030 K916SX **C** — *Extra processes or additions code*

# Tune VWS E



Colour included  
in the price

## Legend



Available in chrome finish.



Radiator available in a "water" version.



Radiator suitable for dual fuel connection. Electric heating element can be installed.



Radiator available in electric only version. It comes prefilled with a 'heating medium' and equipped with a heating element. All tested and ready to use.



Connection types dedicated for this radiator.  
The icon shows the flow and return connections for the radiator as well as the thermostatic valve and heating element position if applicable.



Optional connections available for this radiator.



Suggested heating element power output for electric and dual fuel versions.



Weight.



Capacity.